

The Innovation & Collaboration Centre (ICC) is the University of South Australia's startup incubator.

The ICC engages with the community through the delivery of community events, workshops and programs which draw on the research and professional expertise of UniSA and our partners, to support the generation of new startups and the growth of existing companies.

The ICC is headquartered in Adelaide and has a regional centre in Whyalla, South Australia.

[icc.unisa.edu.au](http://icc.unisa.edu.au)

## VENTURE CATALYST

The ICC's flagship program is designed to develop and grow founders with innovative or disruptive ideas. It targets early stage ventures and works to make their journey more achievable, accessible and focused.

## FURTHER INFORMATION

### Jasmine Vreugdenburg

Associate Director

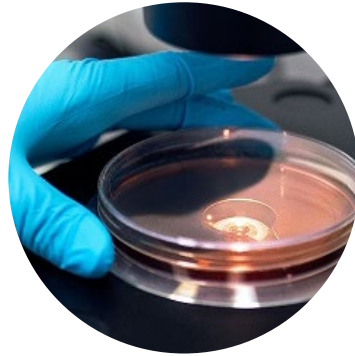
[Jasmine.Vreugdenburg@unisa.edu.au](mailto:Jasmine.Vreugdenburg@unisa.edu.au)

+61 408 856 858

# OminiWell

## Organs in mini-Wells

Recreating living microtissues in the lab



### BENEFITS

- Decreases reliance on animal testing
- Gives researchers, a more in-depth understanding of drug treatments.

### BACKGROUND

OminiWell Pty Ltd was founded in 2020 by award winning biomedical engineering researcher, Dr Chia-Chi Chien. Dr Chien spent seven years on OminiWell before successfully developing an organ culture platform for growing mini-tissue organs in the lab. She transformed the idea from lab technology to clinical application with the next step to use the unique technology for preclinical and clinical services to speed up the drug discovering processes.

### TECHNOLOGY

With everyone's body reacting differently to complex drug treatments, the future of medicine is largely centred around 'personalised medicine'. OminiWell is taking the key elements of a person's biological system and recreating a 'biological twin' within a 3D cell structure on a chip for the purpose of optimising and testing personalised drug combinations that will enable the best outcome for patients. OminiWell is growing complex mini organ tissues in the lab that will enable the acceleration of the drug discovery process and reduce the need for animal testing.

Their platform will be used to improve the decisions of medical professionals who are monitoring clinical treatment for personalised medicine and shortening the time for drug discovery.



**Chia-Lin Chien**  
Chief Executive Officer



**Dr Chia-Chi Chien**  
Founder



**Dr Chun-Hsien Chen**  
Founder

## POTENTIAL MARKETS

- Biotechnology and pharmaceutical companies for drug screening
- Pathology labs for cancer growth and phenotyping
- Toxicology labs to study off-target effects of drugs.

## PARTNERING OPPORTUNITIES

OminiWell is currently seeking partners for co-development and investment opportunities.

